

We provide the only **permanent** solution for your foundation walls



**Superior benefits
you can't ignore:**

	INVISIBEAM	STEEL I-BEAMS	TIE BACKS (NON-HELICAL)
Addresses bowing, tipping, and shearing	✓	✓	X
Guaranteed for life	✓	X	X
Non-intrusive: hides behind paint or drywall	✓	X	X
No annual upkeep	✓	✓	X
Dependent on soil stability	X	X	✓

How we **measure** up

INVISIBEAM BY FORTRESS = 234,700 PSI

STEEL = 53,700 PSI

COMPETITOR CARBON FIBER = 51,571 PSI

ALUMINUM = 45,000 PSI

INVISIBEAM VS. OTHER CARBON FIBER

- 1.** Best warranty on the market
- 2.** Lab and real-world tested to be the strongest carbon solution anywhere
- 3.** Only system with Epoxy Rivet Technology, Rim-joist secured top anchor, and anti shearing bottom anchor
- 4.** Invisibeam by Fortress is the **ONLY** ICC certified, building code approved solution
- 5.** **ZERO** material failures in 20 years
- 6.** Only non-importing, 100% USA company. Manufacturing, operations, tax dollars, and jobs all stay here!

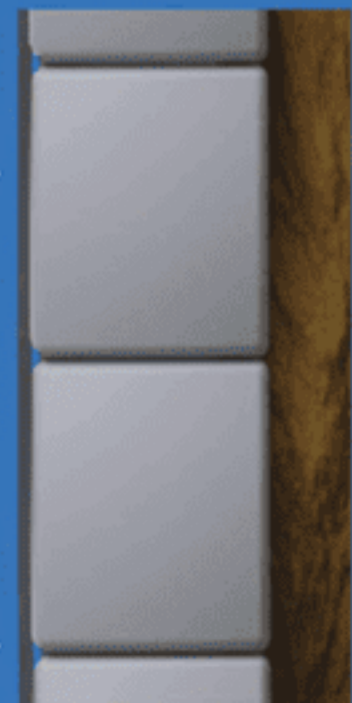
FABRIC CARBON FIBER



Follows mortar seams and indentations, greatly diminishes tensile strength



FORTRESS PRE-SATURATED RIGID CARBON KEVLAR



Maintains rigidity and tensile strength across mortar joints



Strength Where It Matters Most.

INVISIBEAM™

MADE BY FORTRESS



MADE IN THE
USA

YOUR LOCAL CERTIFIED INSTALLER:



CONTACT INFO

www.standardwater.com

1-800-978-7867

www.FortressForLife.com



What does ICC Certification mean for you?

Invisibeam by Fortress meets all building code requirements and will pass all inspections. Future home buyers, appraisers, realtors, and inspectors see that your foundation wall is solid for years to come.

Never worry about that wall again! The confidence you have transfers with our warranty to future owners of the home.



FUTURE HOME BUYERS

HOME INSPECTORS

REALTORS & APPRAISERS

Invisibeam by Fortress is the **solution** for:

BOWING



TIPPING



SHEARING



These problems are caused by external pressure to the outside of the wall

THESE PROBLEMS CAN LEAD TO:

- 1.** Cracking
- 2.** Weakening of the structural integrity of your home
- 3.** Water damage and mold

The science of **strength**

3 COMPONENTS TO STOP WALL MOVEMENT FOR LIFE

1. TOP ANCHOR

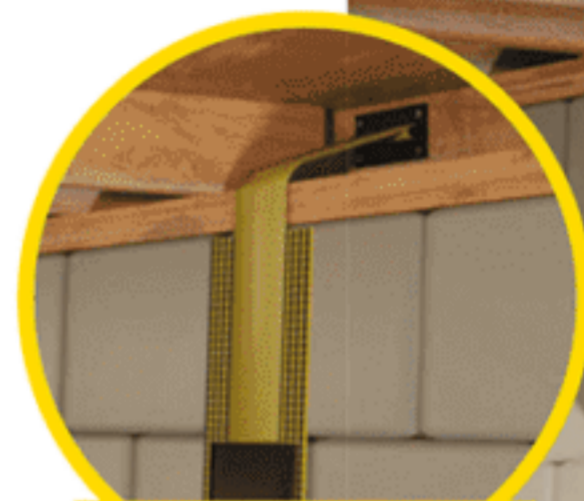
- Patent-pending
- Post-tensioned to insure maximum strength
- Anchors to Rim Joist, insuring strongest anchor point possible

2. CARBON / KEVLAR® STRAP - STRONGER THAN STEEL

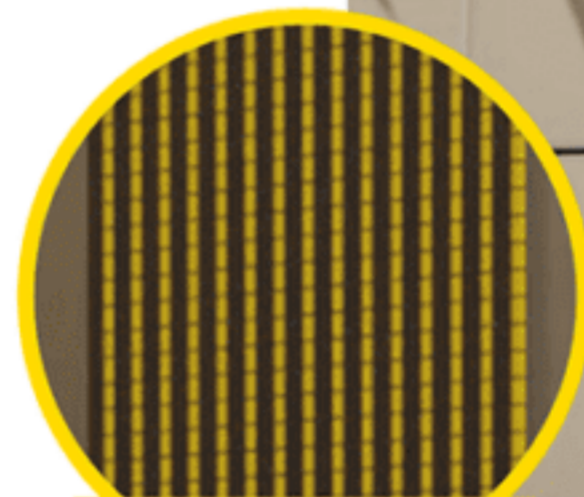
- Patented Epoxy Rivet Technology guarantees the strongest adherence to the wall
- Factory epoxy-saturated unidirectional carbon insures maximum efficiency

3. BOTTOM ANCHOR

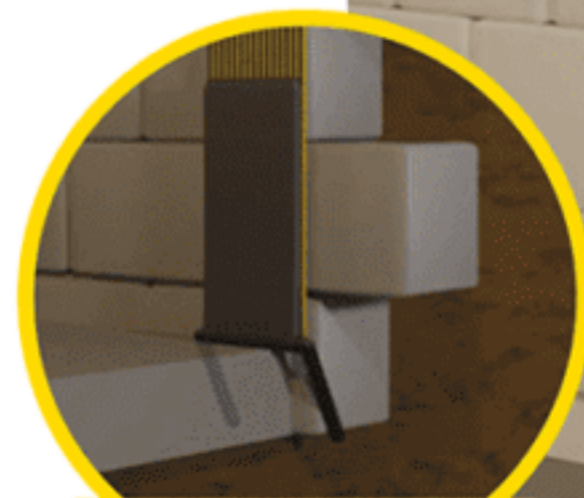
- Patented
- Anti Shearing keeps the wall from sliding
- Anchors below wall and into foundation



TOP ANCHOR



CARBON /
KEVLAR® STRAP



BOTTOM ANCHOR