

## SEAMLESS DUAL DISCHARGE SYSTEM<sup>SM</sup>

- One piece from the sump basin to the outside of your home (no seams or connections to crack or leak)
- Flexible; if water ever freezes inside the pipe it will expand rather than crack
- Standard Water installs Dual Discharge (two pipes) in case you want to add a battery backup system.
- Dual Discharge pipes need not exit the home next to each other.



## FREE FLOW BURIED DISCHARGE SYSTEM

- Move water away from house underground
- Unobtrusive, will not compete with your landscaping
- Intake solves freezing problems in winter.
- Openings allow water to drain out next to house
- Optional de-icing cable ensures main line won't freeze up



**BEFORE** Discharge Pipe extending Across Landscaping.

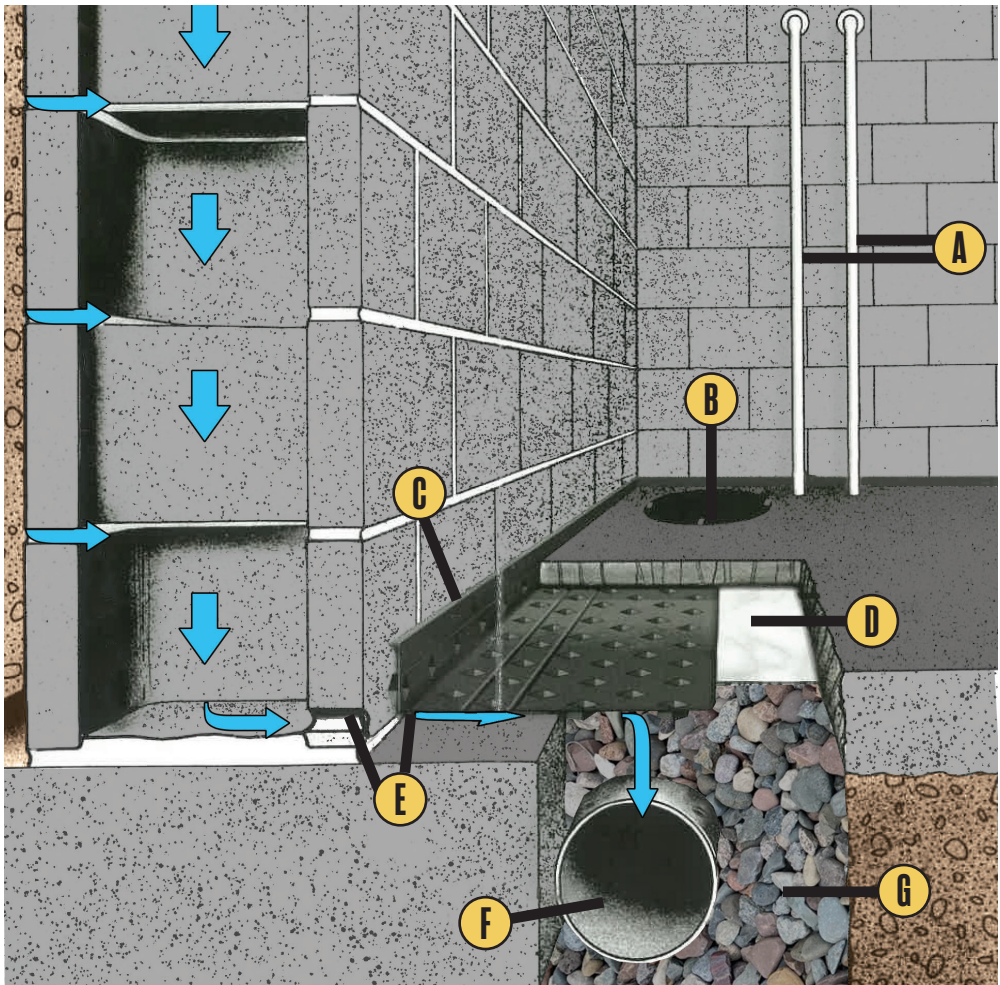


**AFTER** Discharge Pipe buried, extending unseen into yard.

# SUPERIOR DRAIN TILE & SUMP PUMP SYSTEM!



**STANDARD WATER  
CONTROL SYSTEMS**



**A** Seamless Dual Discharge System<sup>SM</sup>

**B** Superior Sump System<sup>SM</sup>  
includes Diamond Plate<sup>SM</sup> Cover

**C** Patented Diamond Drainage Board<sup>TM</sup>

**D** Plastic Moisture Barrier

**E** Drain Holes

**F** Rigid PVC Drainage Pipe

**G** Washed Rock



## CHOOSE STANDARD FOR YOUR DRAIN TILE BECAUSE:

1. Professional Installations Since 1977!
2. Most Installs Done in 1 or 2 days!
3. Lifetime of Structure Warranty - Best in Class!
4. Patented Diamond Drainage Board<sup>TM</sup> for Best Water Flow!
5. 3" Rigid Drain Tile, not corrugated, is installed next to footing not on footing, thus ensuring the best water flow! Reference U of MN study!
6. Quality work by Tenured Foreman - all over 20 years with Standard!
7. Commercial Grade HEPA Filtration and Exhaust Fans to ventilate and remove dust - for your safety and ours!
8. Commercial Grade Sump Pumps sealed with Diamond Plate<sup>SM</sup> Cover for Safety!



THE STANDARD SUPERIOR SUMP SYSTEM<sup>SM</sup> IS BEST IN CLASS BECAUSE:

- 1. Commercial Grade Pumps with 3, 4 and 5 Year Warranties!
- 2. Dual Discharge for Backup Pump and Serviceability!
- 3. Dual Float Switch and Controller Sounds an alarm when power fails, problem detected or low battery!
- 4. Seamless Discharge System<sup>SM</sup> - Quiet and Prevents Leaks!
- 5. Heavy Duty Basin and Diamond Plate<sup>SM</sup> Cover. Lid is tightly sealed so pets and children don't fall in, and keeps harmful Odors and Gases out!
- 6. Energy Efficient - saves \$57 per year on average!
- 7. Maintenance Free Batteries with Backup can run non-stop 6 hours!
- 8. Many Options! Pumps, Basins, Backups, Alternating...

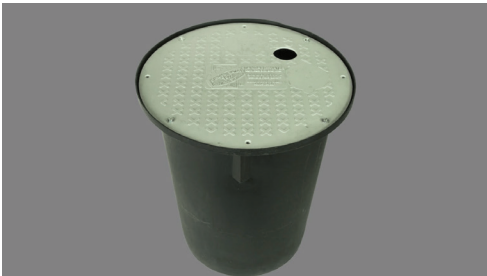
SP-33 SUBMERSIBLE PUMP

Industrial Grade for Residential Installation



BATTERY BACK UP SYSTEM

Insurance experts suggest homeowners install battery backup pump systems in their homes and some policies may offer a discount on premiums if a backup system is installed. We suggest you check with your insurance agent.



SP-33 SUBMERSIBLE PUMP

- Flow @ 0 ft Head - 4100 GPH/68.3 GPM
- Flow @10 ft Head - 2770 GPH/46.1 GPM
- Gallons per watt hour - 6.1 G/Wh
- Max Head - 31 ft. (9.4 m)
- Strainer - Plated steel
- Discharge 1 1/2" 3.8 cm)
- Motor HP/Type - HP - PSC Motor
- Voltage - 115 VAC, 60 Hz
- Amp. Draw @10 ft Head - 3.8 Amps

SUMP BASIN & DIAMOND PLATE<sup>SM</sup> COVER

- High Quality, structural grade materials
- Cover bolts securely to basin, sealing it
- Keeps Radon & other soil gases from getting into your home
- Protects small children and pets
- Standard Water logo, website and phone number embossed on cover



BACK UP PUMP

- Pumps 2400 GPH at a 10-foot head/9.0 Amps DC
- Stainless steel shaft, rulon seal, and rust proof housing provide long-lasting, reliable operation
- Includes Dual Float Switch (the most advanced available)

SP-33 SWITCH AND CONTROLLER

- Includes Dual Float Switch. Sounds an alarm and alerts when: AC Power has failed, Pump or float problem is detected, 9v battery is low or slide switch is off
- Includes export terminals for connecting to a remote dialer or home security system (smart circuit technology)
- System is operating - light flashes when active
- Adjustable run time 5-45 seconds after the water level falls (allowing for conditions specific to your home)
- Activates main pump weekly to exercise and extend pump life
- Universal controller mounting tabs
- 4' power cord
- 10' flat switch/sensor cord
- Piggy-back plug



BACK UP CONTROL UNIT

- Monitors household power, battery and pump conditions
- Triggers and runs backup pump once a week to assure proper operation
- Low fluid sensor (protects against the number one reason other battery backup systems fail)
- Tells your if water needs to be added
- Alarm will sound if a problem arises
- Alarm can be silenced
- Charger maintains the battery at full charge



BATTERY

- Can run 7 1/2 hours straight or intermittently for days
- Will remain viable for 5-7 years
- Can add a second battery for double the life